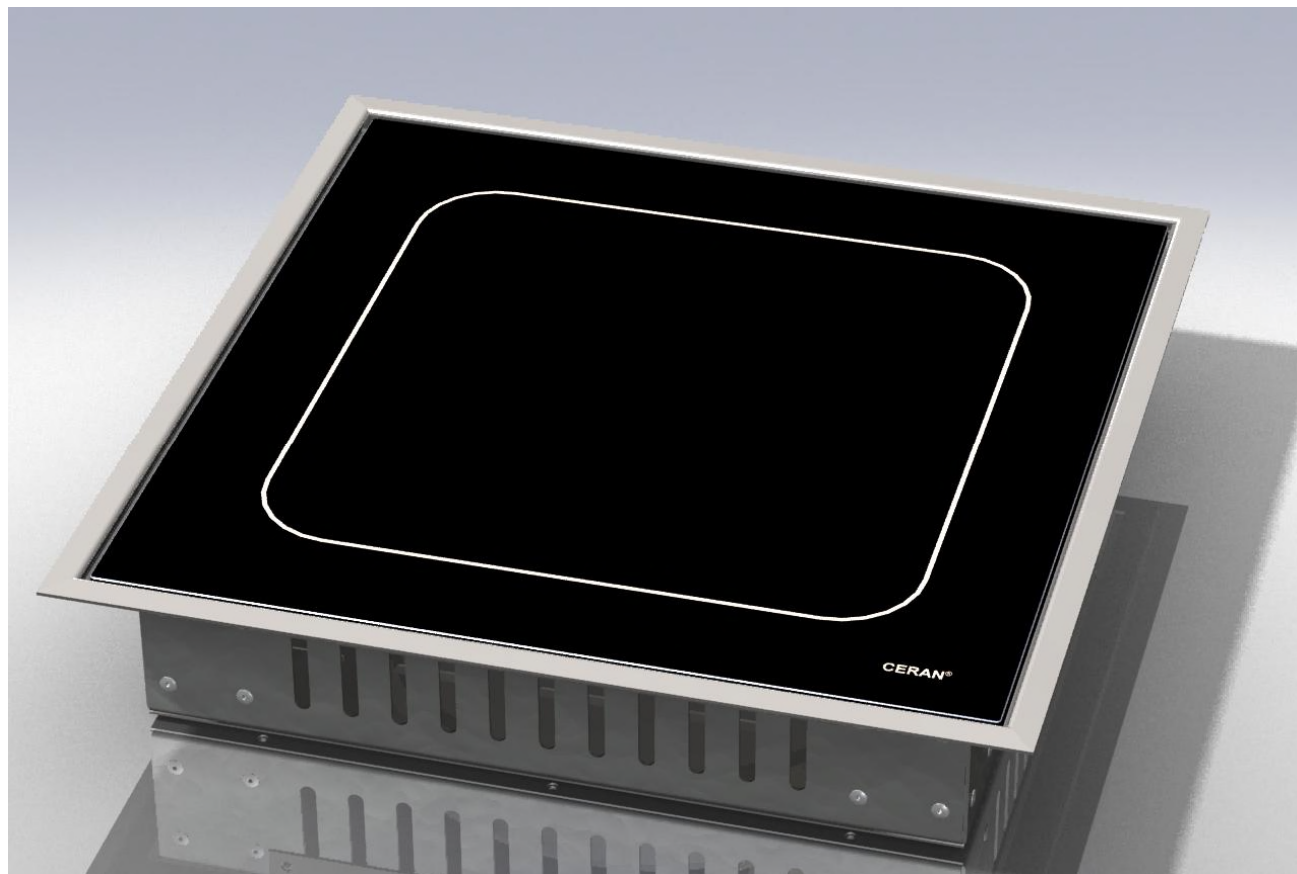


Piano Cottura ad Infrarosso

Infrared Cooking Plate



Dimensioni (mm) Size (mm)	Piastra Plate	Superficie Surface	Note Notes
350x350x85 390x390x85	Ø 210 / 2 C. – 2.200W - 230V Ø 230 / 1 C. – 2.300W - 230V	320x320x 4 mm 360x360x4 mm 360x360x6 mm	

Piano cottura da incasso a 1 posto con superficie in vetro ceramico Ceran® e cornice inox, piastra tonda ad infrarosso comandata da regolatore di energia.

Completo di lampada di calore residuo e manopola.

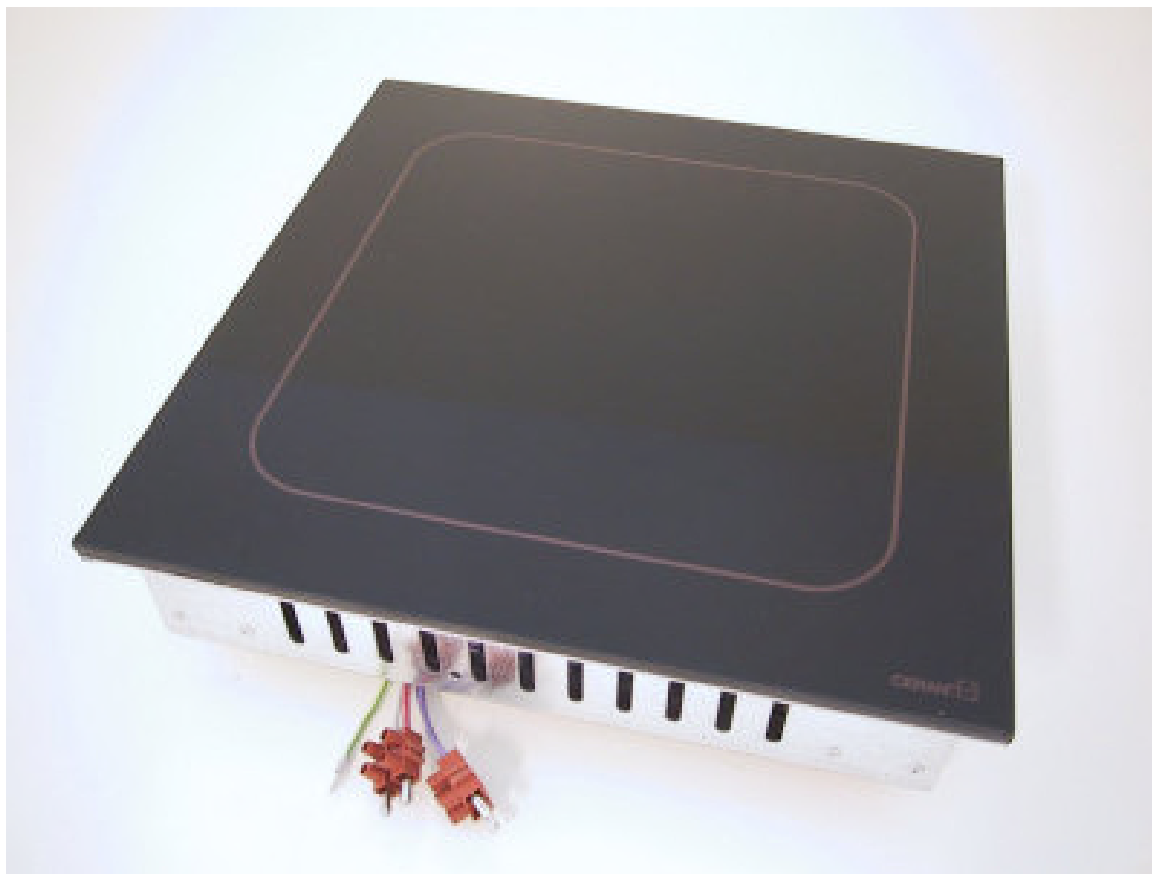
Può essere fornito completamente cablato per velocizzare l'installazione (Ready to Install).

Built-in cooker with 1 cooking area, Ceran® glass ceramic panel and stainless steel frame, round infrared plate controlled with an energy regulator.

Complete with residual heat lamp and knob. It can be supplied with complete wiring for an easy assembling (Ready to Install).

Piano Cottura ad Infrarosso

Infrared Cooking Plate



Dimensioni (mm) Size (mm)	Piastra Plate	Superficie Surface	Note Notes
320x320x85 360x360x85	Ø 210 / 2 C. – 2.200W - 230V Ø 230 / 1 C. – 2.300W - 230V	320x320x 4 mm 360x360x4 mm 360x360x6 mm	

Piano cottura da incasso a 1 posto con superficie in vetro ceramico Ceran®, piastra tonda ad infrarosso comandata da regolatore di energia.

Completo di lampada di calore residuo e manopola.

Può essere fornito completamente cablato per velocizzare l'installazione (Ready to Install).

Built-in cooker with 1 cooking area, Ceran® glass ceramic panel, round infrared plate controlled with an energy regulator.

Complete with residual heat lamp and knob.

It can be supplied with complete wiring for an easy assembling (Ready to Install).